

# Gate Operators

## Product Catalog

**Controls**

**Gate Operator Accessories**



CHAMBERLAIN®  
**LiftMaster™**  
PROFESSIONAL

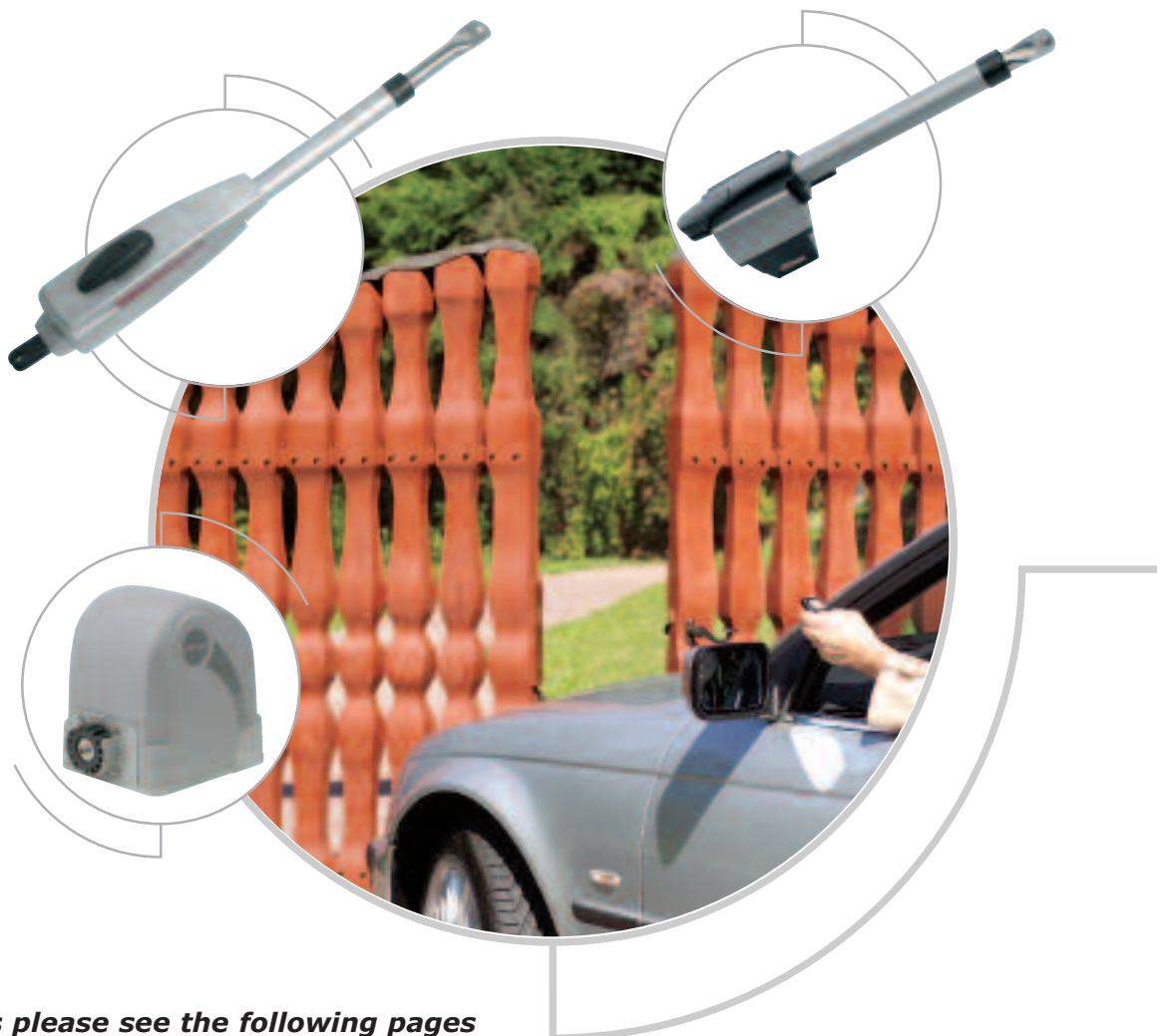
**The following Gate Openers are available:**

◆ **230 Volt:**

- **LYN300** Wing Gate Opener, for doors up to 2.5m and 250kg.
- **LYN400** Wing Gate Opener, for doors up to 4.0m and 250kg.
- **SCS300** Wing Gate Opener, for doors up to 3.0m and 250kg.
- **ECO300** Wing Gate Opener, for doors up to 2.5m and 250kg.
- **ART300** Wing Gate Opener, for doors up to 3.0m and 250kg.
- **SLY300** Sliding Gate Opener, for doors up to 5.0m and 300kg
- **SLY500** Sliding Gate Opener, for doors up to 8.0m and 500kg
- **SLY1000** Sliding Gate Opener, for doors up to 10.0m and 1000kg.
- **SGO1500** Sliding Gate Opener, for doors up to 12.0m and 1000kg.
- **SUB300** Underground Gate Operator, for doors up to 4.0m and 600kg.

◆ **24 Volt:**

- **LYN300** Wing Gate Opener, for doors up to 3.0m and 250kg.
- **LYN400** Wing Gate Opener, for doors up to 4.0m and 250kg.
- **SCS300** Wing Gate Opener, for doors up to 3.0m and 250kg.



*For further details please see the following pages*



# engineered with the professional in mind...

- **Symmetrical Design**

Fits both right and left hand installations, making it convenient to install and the best operator to have in stock at all times.

- **Long-lasting durability**

Each model features a powder-coated, diecast aluminum housing to resist rust and corrosion.

- **Everything you need is included**

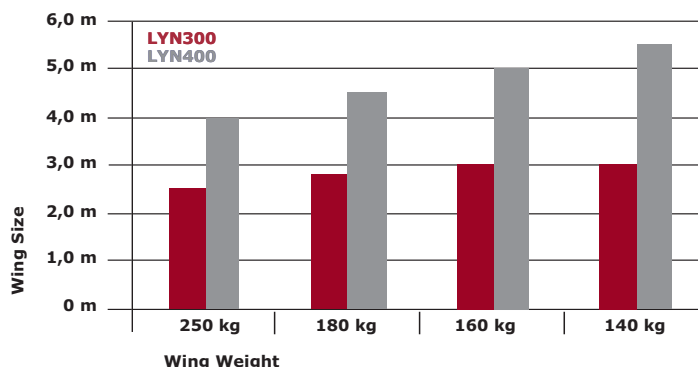
Complete installation instructions and all required hardware are provided.

- **Added security**

Each model features a manual key lock release that will only operate with a removable key for added assurance during power outages.

- **Heavy duty**

Rugged steel screw and gearing provide years of reliable, quiet performance.



## Specification Chart

		LYN300	LYN300KS Kit	LYN300K Kit	LYN300K 120 Kit	LYN400	LYN400KS Kit	LYN400K Kit	LYN400K 120 Kit
Number of operators		1	1	2	2	1	1	2	2
Voltage in	VAC	230	230	230	127	230	230	230	127
Frequency	Hz	50	50	50	60	50	50	50	60
Power	W	280	280	280	280	280	280	280	280
Current	A	1.2	1.2	1.2	2.4	1.2	1.2	1,2	2.4
Rated thrust	N	250	250	250	250	250	250	250	250
Capacitor	microF	6.3	6.3	6.3	25	6.3	6.3	6.3	25
Thermal overload protection	deg C	140°	140°	140°	140°	140°	140°	140°	140°
Motor speed	RPM	1400	1400	1400	1650	1400	1400	1400	1650
Travel speed (arm)	mm/s	20	20	20	20	12	12	12	12
Travel	mm	300	300	300	300	400	400	400	400
Duty cycle (max)	cycles/hr	20	20	20	20	10	10	10	10
Working temperature range	deg C	-20°C/+55°C	-20°C/+55°C	-20°C/+55°C	-20°C/+55°C	-20°C/+55°C	-20°C/+55°C	-20°C/+55°C	-20°C/+55°C
Protection class		I	I	I	I	I	I	I	I
Degree of protection	IP	44	44	44	44	44	44	44	44
Weight (arm)	kg	6.85	6.85	6.85	6.85	7.15	7.15	7.15	7.5
Electronic control		no	yes	yes	yes	no	yes	yes	yes
Remote controls		no	2 X 3ch mini	2 X 3ch mini	2 X 3ch mini	no	2 X 3ch mini	2 X 3ch mini	2 X 3ch mini
Frequency	MHz	N/A	433.92	433.92	390	N/A	433.92	433.92	390
IR sensor		no	yes	yes	yes	no	yes	yes	yes
Flashing light		no	yes	yes	yes	no	yes	yes	yes
Key switch		no	yes	yes	yes	no	yes	yes	yes
Antenna Kit		no	yes	yes	yes	no	yes	yes	yes
Max gate wing length	m	2.5	2.5	2.5	2.5	4	4	4	4
Max gate weight at max. wing length	kg	250	250	250	250	250	250	250	250

### Optional accessories

- **600091** Main Switch
- **600008** IR Stand
- **600084** Emergency Stop
- **600046** Safety Edge
- **600015** Key Switch Stand
- **100263** Extra Infrared Sensors
- **94330E/94333E/94335E** Remote Controls
- **9747E** Wireless Keyless Entry



Install all equipment in compliance with EN60335-2-103

**2-year warranty**

9A6302



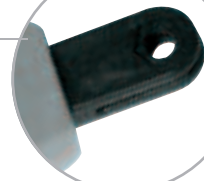


# SCS Series

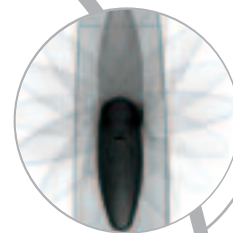
230 Volt



Wing gate operator



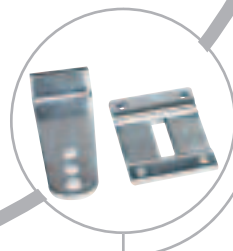
Professional Post Connection



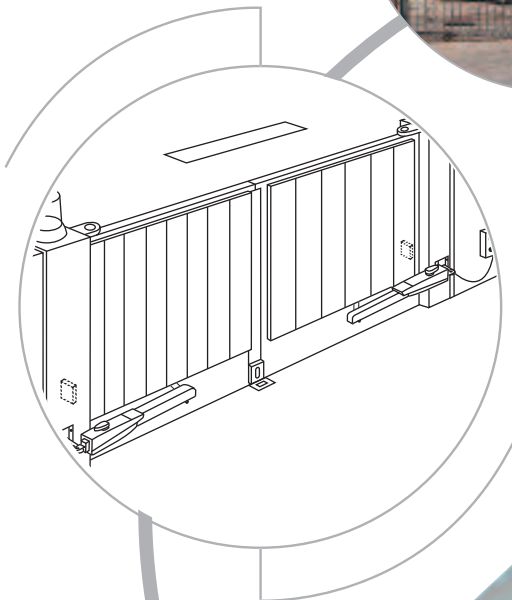
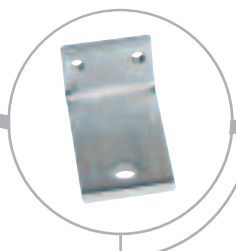
Manual Release with Key Lock



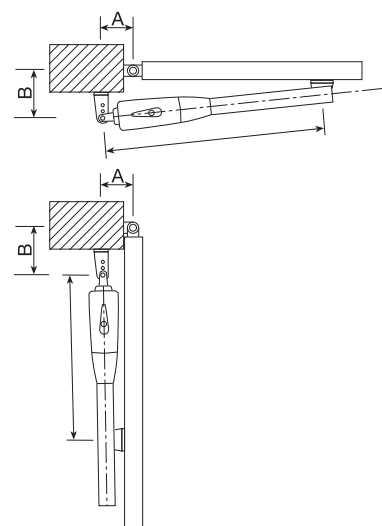
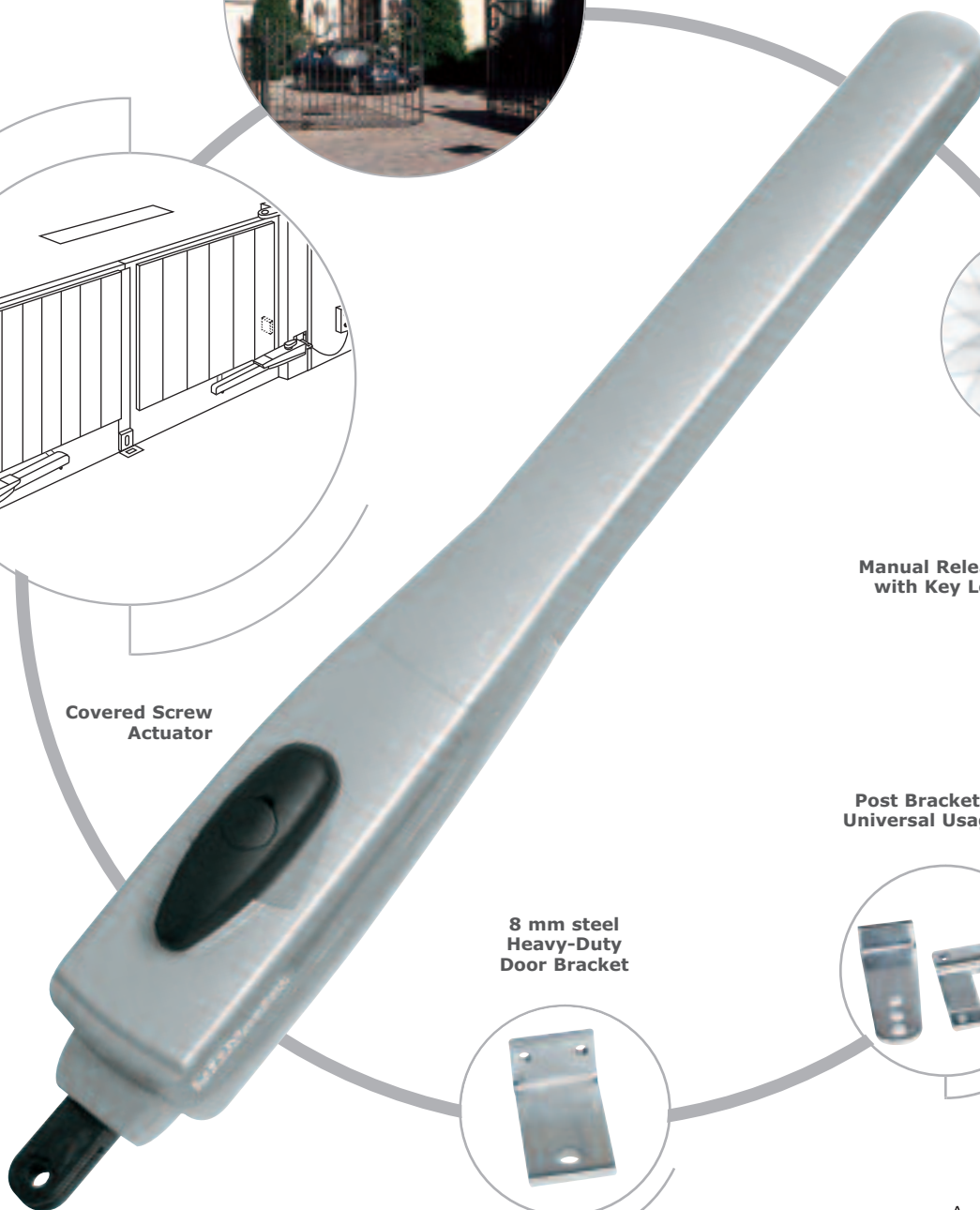
Post Brackets Universal Usage



8 mm steel Heavy-Duty Door Bracket



Covered Screw Actuator



SCS300

		A							
		10	12	14	16	18	20	22	
B	10		115°		110°	105°	100°		
	12		110°	121°	101°	100°	94°		
	14		108°	105°	93°	100°	92°		
	16		106°	95°	87°				
	18			93°					A=15 cm =approx. 90° B=15 cm
	20								
22									

## engineered with the professional in mind...

### • Symmetrical Design

Fits both right and left hand installations, making it convenient to install and the best operator to have in stock at all times.

### • Long-lasting durability

Each model features a powder-coated, diecast aluminum housing to resist rust and corrosion.

### • Everything you need is included

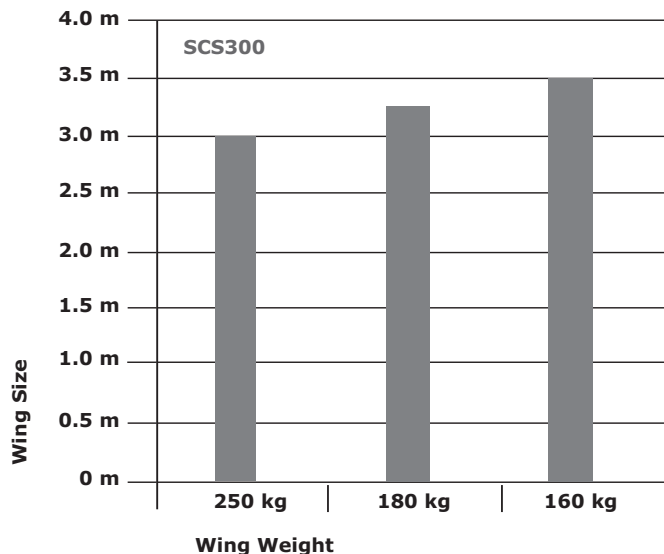
Complete installation instructions and all required hardware are provided

### • Added security

Each model features a manual key lock release that will only operate with a removable key for added assurance during power outages.

### • Heavy duty

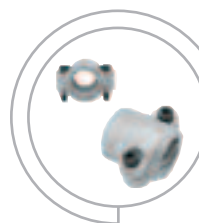
Rugged steel screw and gearing provide years of reliable, quiet performance.



## ...for customer that demanded the best

### Specification Chart

		SCS300	SCS300KS Kit	SCS300K Kit	SCS300K 120 Kit
Number of operators		1	1	2	2
Voltage in	VAC	230	230	230	127
Frequency	Hz	50	50	50	60
Power	W	280	280	280	280
Current	A	1.2	1.2	1.2	2.4
Rated thrust	N	250	250	250	250
Capacitor	microF	6.3	6.3	6.3	25
Thermal overload protection	deg C	140°	140°	140°	140°
Motor speed	RPM	1400	1400	1400	1650
Travel speed (arm)	mm/s	20	20	20	20
Travel	mm	340	340	340	340
Duty cycle (max)	cycles/hr	20	20	20	20
Working temperature range	deg C	-20°C/+55°C	-20°C/+55°C	-20°C/+55°C	-20°C/+55°C
Protection class		I	I	I	I
Degree of protection	IP	44	44	44	44
Weight (arm)	kg	6.6	6.6	6.6	6.6
Electronic control		no	yes	yes	yes
Remote controls		no	2 X 3ch mini	2 X 3ch mini	2 X 3ch mini
Frequency	MHz	NV	433.92	433.92	390
IR sensor		no	yes	yes	yes
Flashing light		no	yes	yes	yes
Key switch		no	yes	yes	yes
Antenna Kit		no	yes	yes	yes
Max gate wing length	m	3	3	3	3
Max gate weight at max. wing length	kg	250	250	250	250



### 207382

#### SCS Operator Hard stops

- pieces, open/close direction
- Reduces the need of floor mount hard stops
- Can be mount without dismantling of operator
- Easy to adjust

### Optional accessories

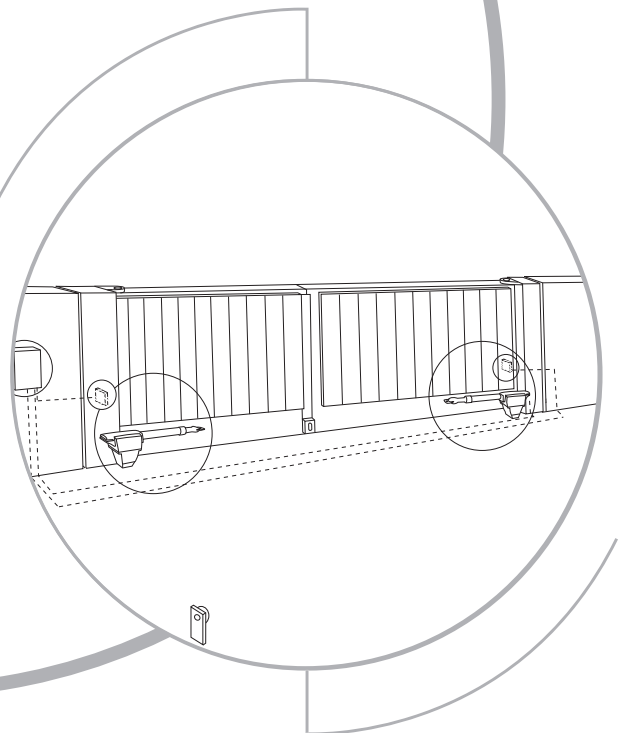
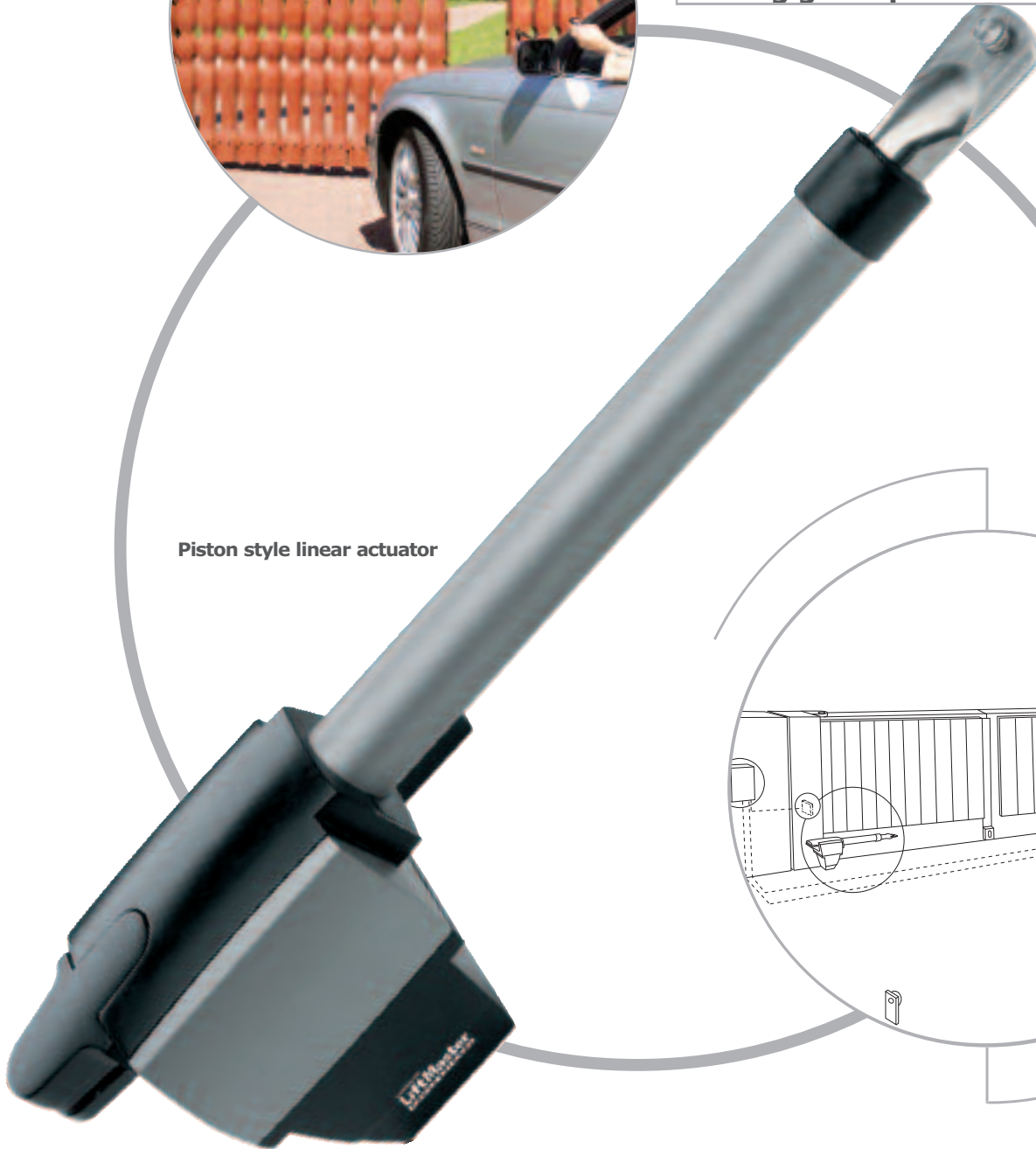
- 600091 Main Switch
- 600008 IR Stand
- 600084 Emergency Stop
- 600046 Safety Edge
- 600015 Key Switch Stand
- 100263 Extra Infrared Sensors
- 94330E/94333E/94335E Remote Controls
- 9747E Wireless Keyless Entry





**Swing gate operator**

**Piston style linear actuator**



**ECO300**

		A						
		10	12	14	16	18	20	22
B	10		115°					
	12		110°	121°	110°	105°	100°	
	14		108°	105°	101°	100°	94°	
	16		106°	95°	93°	100°	92°	
	18			93°	87°	87°	A=15 cm =approx. 90° B=15 cm	
	20							
	22							

**ECO400**

		A						
		14	16	18	20	22	24	26
B	14	105°	120°	125°	111°	105°	99°	95°
	16	103°	118°	113°	102°	98°	94°	90°
	18	111°	115°	105°	97°	93°	90°	
	20	109°	103°	96°	90°	100°		
	22	106°	95°	90°		87°/118°	A=19 cm =approx. 90° B=19 cm	
	24	93°						
	26							

## new installation and replacements

- **Left or right installation**

Motor and arm may be re-assembled to fit either left or right opening swing gates.

- **long-lasting durability**

Reinforced nylon housing with heavy-duty powder-coated steel tube.

- **Everything you need is included**

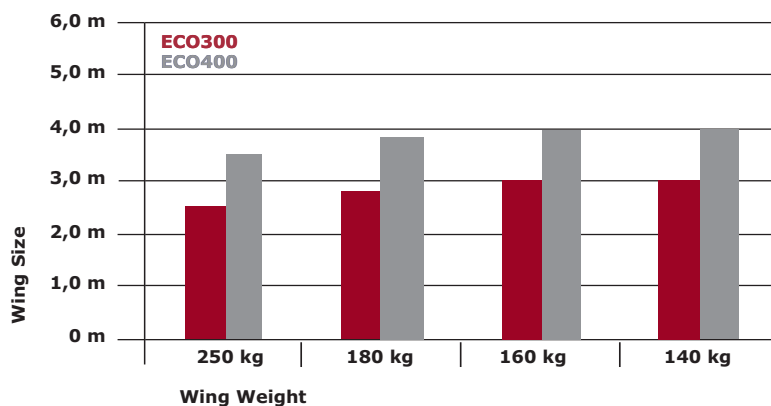
Complete installation instructions and all required hardware are provided.

- **Added security**

Each model features a manual key lock release that will only operate with a removable key for added assurance during power outages.

- **Heavy duty**

Rugged steel screw and gearing provide years of reliable, quiet performance.



## affordable residential convenience

### Specification Chart

		ECO300K double wing kit ECO300KS single arm kit	ECO400K double wing kit ECO400KS single arm kit
Voltage in	VAC	230	230
Frequency	Hz	50	50
Power	W	220	220
Current	A	1.3	1.3
Rated thrust	N	250	250
Capacitor	microF	5	5
Thermal overload protection	deg C	140°	140°
Motor speed	RPM	1400	1400
Travel speed (arm)	mm/s	17	13
Travel	mm	300	400
Duty cycle (max)	cycles/hr	16	8
Working temperature range	deg C	-20°C/+55°C	-20°C/+55°C
Protection class		I	I
Degree of protection	IP	44	44
Weight (arm)	kg	4.7	5
Electronic control		yes	yes
Remote controls		2 X 3ch mini	2 X 3ch mini
Frequency	MHz	433.92	433.92
IR sensor		yes	yes
Flashing light		optional	optional
Key switch		optional	optional
Antenna Kit	m	optional	optional
Max gate wing length	m	2.5	2.5
Max gate wing weight	kg	250	250

### Optional accessories

- **600091** Main Switch
- **600008** IR Stand
- **600084** Emergency Stop
- **600046** Safety Edge
- **600015** Key Switch Stand
- **100263** Extra Infrared Sensors
- **94330E/94333E/94335E** Remote Controls
- **9747E** Wireless Keyless Entry





**ART300**

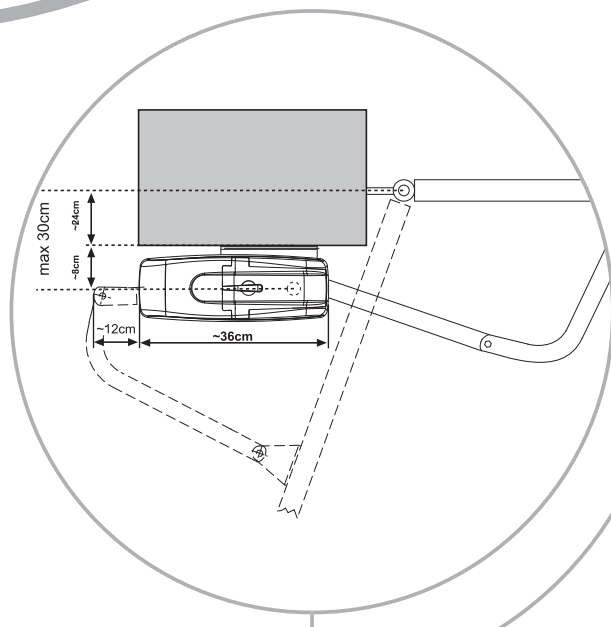
CHAMBERLAIN  
**LiftMaster**  
PROFESSIONAL



**Articulated arm  
gate operator**



**Symmetrical &  
compact design**



# the wing gate opener for wide pillars

The special arm is ideal for wide pillars. An automatic stop and built-in limit switch are special features for this operator.

## Features:

- Symmetrical and compact design
- Automatic stop
- Built-in limit switch Open/Close
- Manual release in case of power outage
- Mounting brackets for wide pillars included
- Maintenance free
- Rotation distances possible up to 30cm
- Robust construction
- Can be used for folding doors

### ART-1

#### Folding door arm

- For folding doors up to 1.5m each wing
  - Mounted to top of folding door
  - Can be used right and left side
  - Includes door bracket



### ART-2

#### 2m gate arm

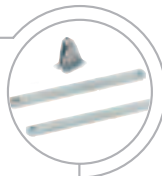
- 2m /150kg
- For gates with low side room
- Light duty



### ART-3 3m

#### 3m gate arm

- 3m/250kg
- Includes door bracket & screws
- Heavy duty



### ART-4

#### External release lock for gates

- Robust construction
- For gates without second entrance.
  - Releases operator from outside
  - Provides additional safety against power failures



### ART-5

#### Internal release lock for gates

- To open folding door in case of power failure
  - Easy to install
- Provides additional safety against power failure



### ART-6

#### Base plate narrow fit

- Suitable for narrow posts
- Easy to install



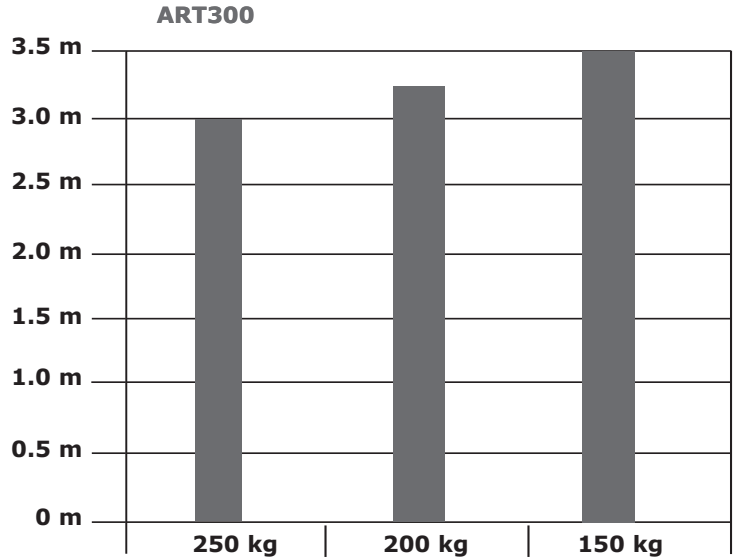
### ART-7

#### Base plate standard

- Suitable for standard posts
- Easy to install



Wing size



Wing weight

## Specification chart

		ART300	ART300K
Number of operator		1	2
Voltage in	VAC	230	230
Frequency	Hz	50	50
Power max	W	400	400
Current max	A	1.8	1.8
Thrust (max)	Nm	350	350
Capacitor	micro F	10	10
Thermal overload protection	deg C	140°	140°
Motor speed	RPM	1400	1400
Opening time 90 degree	sec	14	14
Duty cycle	cycles/hr	20	20
Working temperature range	deg C	-20°C/+55°C	-20°C/+55°C
Protection class		I	I
Degree of protection	IP	44	44
Weight	kg	9	9
Drive arms included		no	yes (3m)
Electronic control		no	yes
Remote controls		no	2 X 3ch mini
Frequency	MHz	no	433.92
IR sensor		no	yes
Flashing light		no	yes
Key switch		no	yes
Antenna		no	yes
Approx. gate length	m	3	3
Max gate weight at max. length	kg	250	250

## Optional accessories

- **600091** Main Switch
- **600008** IR Stand
- **600084** Emergency Stop
- **600046** Safety Edge
- **600015** Key Switch Stand
- **100263** Extra Infrared Sensors
- **94330E/94333E/94335E** Remote Controls
- **9747E** Wireless Keyless Entry



Install all equipment in compliance with EN60335-2-103

2-year warranty

9A6202

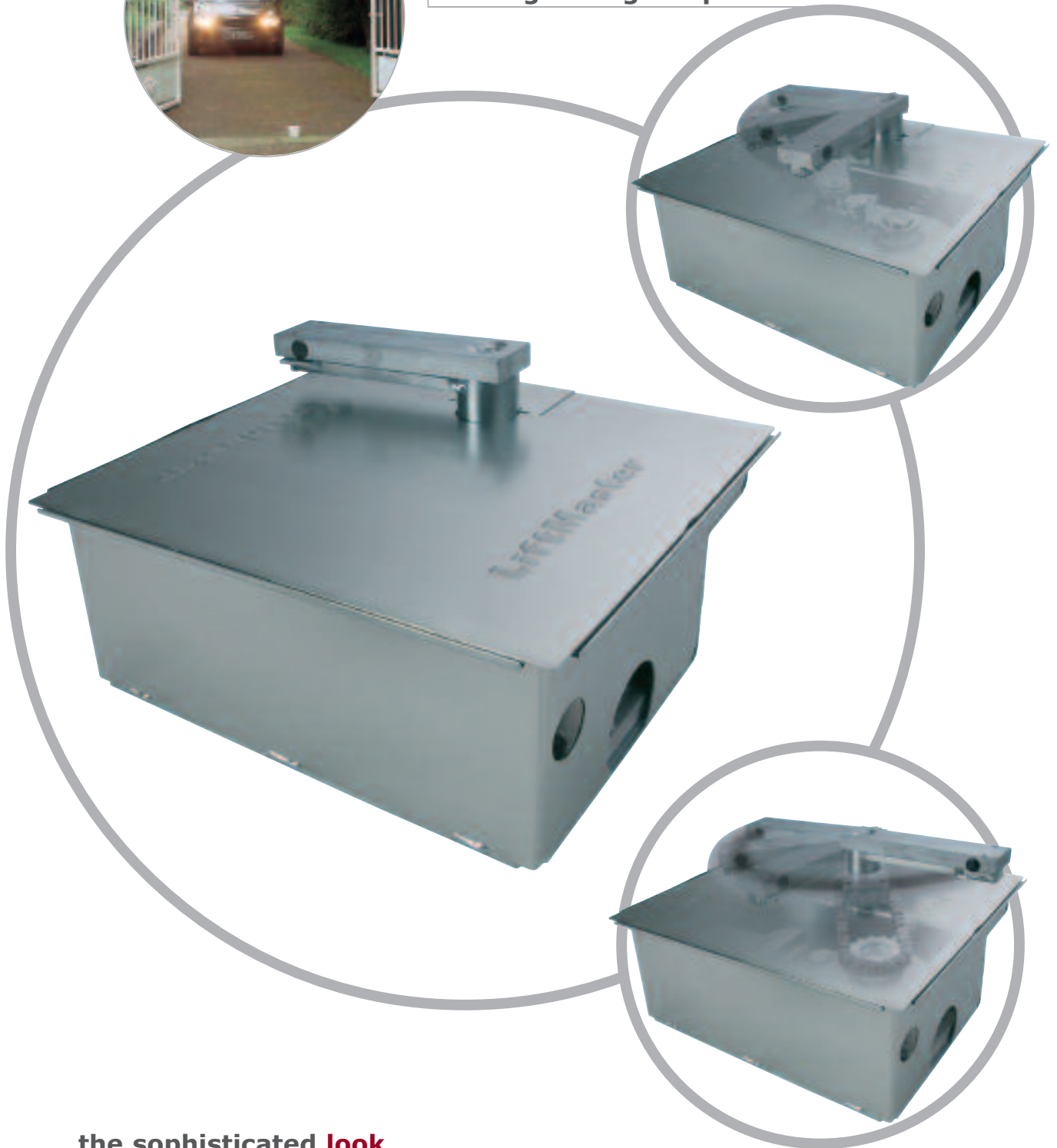


**SUB300**

CHAMBERLAIN  
**LiftMaster**  
PROFESSIONAL



**Underground gate operator**



**the sophisticated look**

**luxury and style**

Installed under the gate, set in secrecy, for those who put high demands on an opener.

**ultimate dependability**

SUB motors all feature heavy-duty drive systems for years of strong, quiet performance.

**quality craftsmanship**

These models are tested and guaranteed by Chamberlain to ensure years of trouble-free operation.

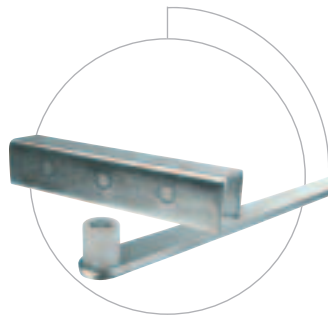
# The luxury class: the underground motor for the sophisticated look

## Specification Chart

		SUB300M
Voltage In	V AC	230
Frequency	Hz	50
Power	W	300
Current	A	2.1
Rated Thrust	N	380
Capacitor	microF	10
Thermal Overload Protection	deg C	150°
Motor Speed	RPM	1400
Duty Cycle (max)	cycles/hr	20
Working Temperature Range	deg C	-25°C to 75°C
Protection Class		I
Degree of Protection	IP	67
Weight (motor)	kg	10
Max Gate Wing Length	m	4
Max Gate Wing Weight	kg	600kg at 2.5m

## Available separately

Electronic Controls	CB1, CB11, GOC1A
Remote Controls	433.92 rolling code 433.92 billion code 27.145 MHz
Flashing Light	FLA230 (CB1) FLA24-2 (CB11)
Key Switch	100027/100010 100041/100034
Antenna Kit	ANT4X-1LM
Infrared-Sensor	771E (CB11) 100263 (CB1)



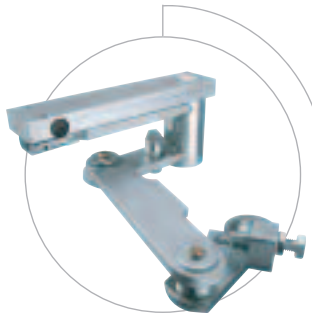
### SUB100S – Retrofit Adapter Arm

- For use if motor output shaft is not installed in-line with gate pivot axis
- For use with SUB-110 or SUB-180
- Weld mounting
- Max. gate wing size 300kg / 3m



### SUB-180 – 180° Arm

- Opens gate to 180°
- Heavy duty chain mechanism
- Built-in manual release with key
- Bearing supported
- For weld mounting

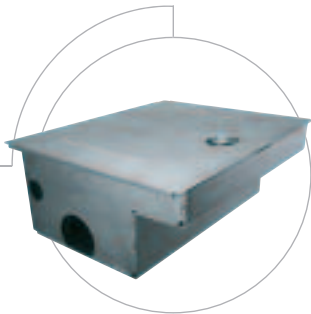


### SUB-110 – 110° Arm

- For weld mounting
- Bearing supported
- Includes adjustable hard-stops for open and close

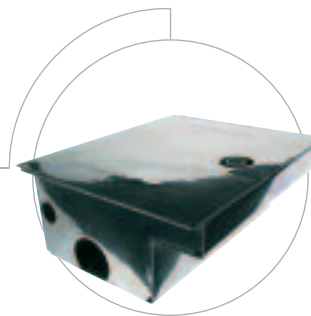
### SUB300B – SUB Box

- Heavy duty box
- Zinc coated – rust resistant
- For SUB300M
- Right or left hand application



### SUB300SS – SUB Box

- Stainless steel box
- Long life expectancy
- For SUB300M
- Right or left hand application



### SUB300M – SUB Motor

- Durable AC motor
- IP67 waterproof
- For wings up to 600kg (2,5m)
- Right or left hand application





# SLY Series



Sliding gate operator



Magnetic Limit Switches



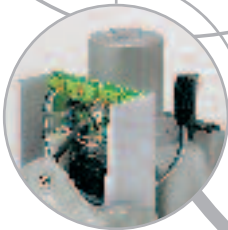
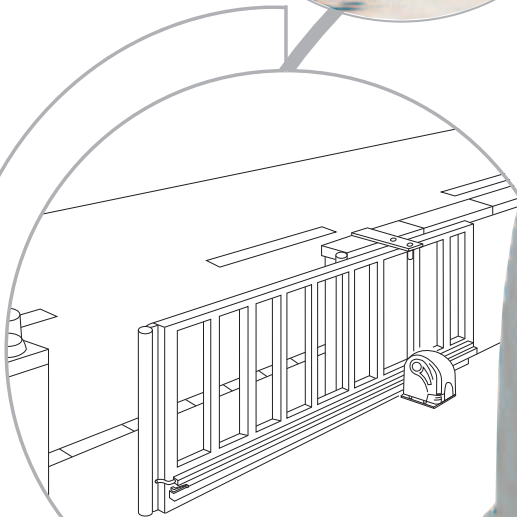
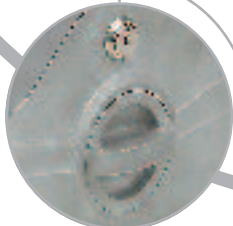
Heavy Duty Mounting Plate



Height Adjustable Mounting Plate

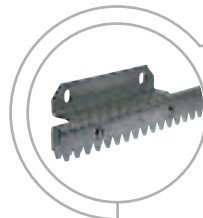


Control Board inside Mount Release Lock with Key



## Efficiency and style

### Racks



202103 • 1m

202110 • 8 x 0.5m

#### Steel Rack

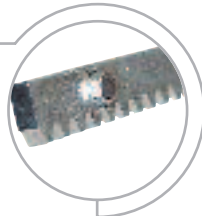
- Folded steel – 50cm/piece
- Distance brackets and hardware included
- Module 4
- For gates up to 500kg

320001 Heavy-Duty • 1m

202097 Heavy-Duty • 4 x 1m Kit

#### Steel Rack

- 10mm thick steel
- Two distance holder for welding included
  - Module 4
- For gates up to 3000kg



202127 • 1m

202134 • 8 x 0.5m

#### Plastic Rack

- Heavy-duty plastic – 50cm/piece
- Distance brackets and screws included.
- Very quiet operation
- Module 4
- For gates up to 500kg



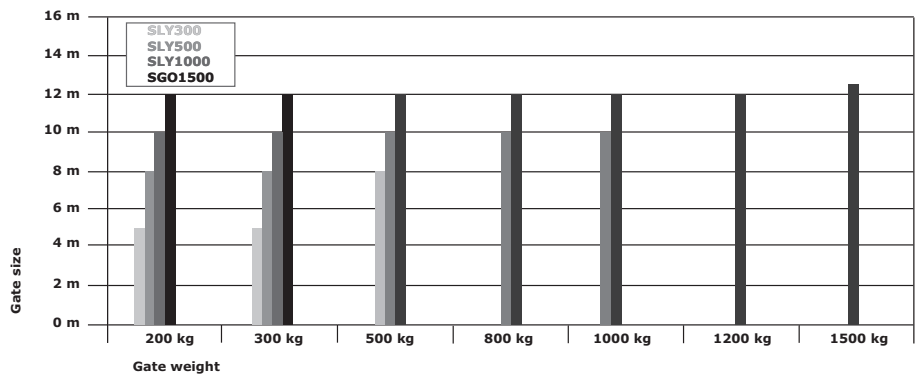


# Strength and durability

Strong and compact mechanical Sliding Gate Openers with pinion drive make it suitable for residential or industrial use.

## Features

- Magnetic Limit Switch
- Lateral Base Plate
- Additional Manual Release
- Weather-proof Housing
- Deep-set Pinions
- Compact Housing
- Maintenance Free
- Permanent Lubrication



## Motor specification chart

		SLY300	SLY500	SLY500-120	SLY1000	SGO1500
Voltage in	VAC	230	230	120	230	230
Frequency	Hz	50	50	60	50	50
Power	W	300	360	360	480	600
Current (max)	A	1.3	1.5	3.0	2.1	3.7
Torque	Nm	9	10	10	12	17
Capacitor	microF	8	10	40	16	16
Thermal overload protection	deg C	140°	140°	140°	140°	140°
Motor speed	RPM	1400	1400	1625	1400	1400
Travel speed	cm/s	12	12	14	11.5	9
Duty cycle (max)	cycles/hr	30	30	30	30	20
Working temperature range	deg C	-20°C/+55°C	-20°C/+55°C	-20°C/+55°C	-20°C/+55°C	-20°C/+55°C
Protection class		I	I	I	I	I
Degree of protection	IP	44	44	44	44	44
Weight	kg	9	9	9	10	13
Max gate wing length	m	5	8	8	10	12
Max gate weight at max. wing length incl. 20% reserve	kg	300	500	500	1000	1000

### 203261 RPM Sensor

- Provides Force Reversal
- Additional Safety
  - Easy to install
  - For AC motor



## Model & carton content chart

Model Number	Drive Unit w/ Cover	Height adj. Mounting Plate	Capacitor	Magnetic Limit Switches	Electronic Controls CB2	Remote Controls	Receiver & Radio MHz	IR Sensor	Flashing Light	Key Switch	Antenna Kit	4m Steel Rack	4m Heavy-duty Steel Rack	4m Plastic Rack	Number of Cartons
SLY300	•	•	•	•											1
SLY300E	•	•	•	•	•										1
SLY300K	•	•	•	•	•	2 x	433	•	•	•	•				1
SLY300K1	•	•	•	•	•	2 x	433	•	•	•	•	•			2
SLY300K2	•	•	•	•	•	2 x	433	•	•	•	•		•		2
SLY300K3	•	•	•	•	•	2 x	433	•	•	•	•			•	2
SLY500	•	•	•	•											1
SLY500E	•	•	•	•	•										1
SLY500K	•	•	•	•	•	2 x	433	•	•	•	•				1
SLY500K1	•	•	•	•	•	2 x	433	•	•	•	•	•			2
SLY500K2	•	•	•	•	•	2 x	433	•	•	•	•		•		2
SLY500K3	•	•	•	•	•	2 x	433	•	•	•	•			•	2
SLY1000	•	•	•	•											1
SLY1000E	•	•	•	•	•										1
SLY1000K	•	•	•	•	•	2 x	433	•	•	•	•				1
SLY1000K2	•	•	•	•	•	2 x	433	•	•	•	•		•		2
SGO1500	•	•	•	mechanical											1
120 Volt SLY500E-120	•	•	•	•											1
SLY500K-120	•	•	•	•	•	2 x	390	•	•	•	•				1
SLY500K1-120	•	•	•	•	•	2 x	390	•	•	•	•	•			2
SLY500K2-120	•	•	•	•	•	2 x	390	•	•	•	•		•		2
SLY500K3-120	•	•	•	•	•	2 x	390	•	•	•	•			•	2



**2-year warranty**

Install all equipment in compliance with EN60335-2-103

9A6602



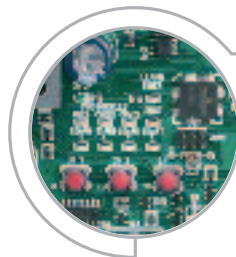
## Controls – wing gates



### CB11 electronic controller for wing gates – 230Volt

- Separate force setting for each gate wing
- Soft/Stop option
- Delay option for overlapping wings
- One wing opening option
- Dip switch for general program selection
- Automatic closing option
- Various radio module options (433MHz, 27MHz, 315.15MHz)
- Memory for 80 remote controls
- Connection for electronic lock
- External lighting control option
- Connection for safety light barriers (Protector System – 771E)
- Connection for contact strip, 8.2 kohms
- Watertight box supplied as standard
- Conforms with CE, EN12453 and EN13241-1
- TÜV-tested

*For more information refer to Specification Chart*

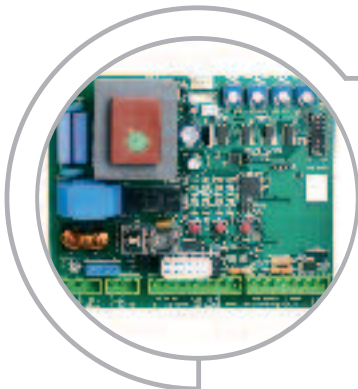


### Easy Adjustment

- Coloured LEDs for status enquiry
- Programming of remote control via push-button
- Dip switch



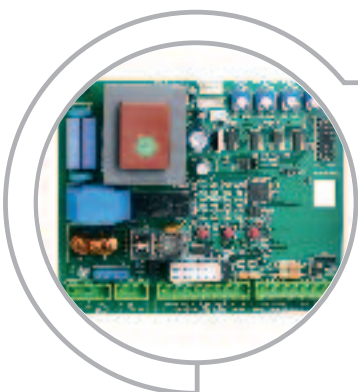
## Controls sliding gates



### CB22 Slide Gate Electronic control – 230Volt

- "Power" start; to get heavy gates moving
- Soft/Stop option
- Adjustable active brake (stops heavy gate wings immediately)
- Dip switch for general program selection
- Electronic lock connection option
- Various radio module options (433MHz, 27MHz, 315.15MHz)
- Memory for 80 remote controls
- Connection for contact strip, 8.2 kohms
- Pedestrian mode (opens partially)
- Automatic closing option
- RPM sensor for reversing (option)
- IP45 box for external wall mounting available (SGO1500)
- External lighting control option
- Connection for safety light barriers (Protector System – 771E)
- Conforms with CE, EN12453 and EN13241-1
- TÜV-tested

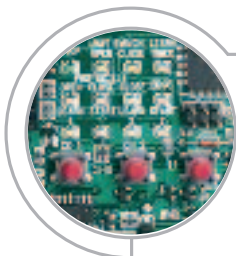
*For more information refer to Specification Chart*



### CB22-120 Slide Gate Electronic control – 120Volt

- "Power" start; to get heavy gates moving
- Active brake (stops heavy gate wings immediately)
- Connections for light barriers (100263)
- Pedestrian mode (opens partially)
- Automatic closing
- 5-PIN receiver (801719)
- RPM sensor for reversing (option)
- IP55 box for external wall mounting available (SGO1500)

*For more information refer to Specification Chart*



### Easy Adjustment

- Coloured LEDs for status enquiry
- Programming of remote control via push-button
- Dip switch



# Specification chart



## Wing and Slide

	WING			SLIDE	
	230V	24V		230V	
		GOC1A	CB11	CB24	CB22
Number of wings to be controlled	2	2	2	1	
Voltage in	VAC	230	230	230/24	230
Voltage out	VAC	230	230	24	230
Frequency	Hz	50	50	50/...	50
Stand by power	W	2	6	0.75	6
Protection	Class	I	I	I	I
Degree of protection	IP	44	44	44	44
Fuses		1	4	3	3
Motor power settings		2	2	1 (Auto)	2
Active wing brake		n/v	n/v	yes	yes
Soft-Stop		no	yes	yes	yes
Force sensing w/stop		no	yes	yes	yes
Max run timer		yes	auto	auto	auto
Wing delay (opening)		yes	yes	yes	n/v
Wing delay (closing)		yes	yes	yes	n/v
Safety infrared connection 100263		yes	yes	yes	yes
Safety edge connection 8,2K Ohm		yes	yes	yes	yes
RPM safety reversing sensor		yes	n/v	yes	Model 041ACOM17001
Safety infrared connection 770/77E		yes	no	no	no
8,2K Ohm Infrared sensor test system (100263)		yes	no	no	no
Open - 1 wing		yes	yes	yes	yes
Open - 2 wings		yes	yes	yes	yes
Hold to run function		yes	yes	yes	yes
Automatic closing		yes	yes	yes	yes
E-lock connection		yes	yes	yes	no
Flashing light connection		yes	yes	yes	yes
Control Illumination Garden		n/v	yes	n/v	yes
Limit switch contacts		yes	no	yes	yes
Test Button		yes	no	no	no
2-channel Radio adapter 801719 (max. 15 Remote Controls/channel)		optional	n/v	n/v	n/v
Radio module 801221 27MHz/433MHz		optional	optional	optional	optional
Remote Control Memory max.		801719 2x15	128	50	128

\* Controls CB11 and CB22 also available as 120 Volt Versions.



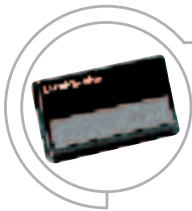
## Radio Accessories

### Remote Controls 433.92MHz

Featuring computer programmed security codes on the European harmonized frequency.

	<b>Billion Code</b>	<b>Rolling Code</b>
<b>Modulation:</b> AM	<b>Weight:</b> 40 g standard (25g mini)	40 g standard (20g mini)
<b>Range:</b> Approximately 45m	<b>Dimensions:</b> 42x75x9mm standard	42x75x9mm standard
<b>Operating temperature:</b> -40°C to +65°C	37x62x10mm mini	36x60x8mm mini

### Rolling Code



#### **94330E** 1-Channel Remote Control

- Rolling code security
- Operates with two 3V battery CR2032 (included)
- Visor clip included
- Yellow LED indicates battery strength



#### **94333E** 3-Channel Remote Control

- Rolling code security
- Operates with two 3V battery CR2032 (included)
- Visor clip included
- Yellow LED indicates battery strength



#### **94335E** 3-Channel Mini Remote Control

- Three channels
- Each channel separate rolling code
- Operates with two 3V batteries CR2032 (included)

### Billion Code



#### **4335E** Mini Remote Control

- Three channels
- Each channel one of 3.5 billion codes
- Operates with two 3V batteries CR2016 (included)
- Key ring included



### Keyless Entry Products



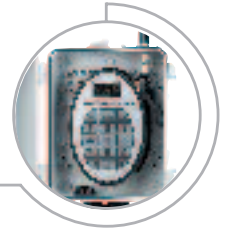
#### **9747E** Wireless Keyless Entry System - Rolling code

- Frequency** 433.92MHz
- Back-lit keyboard for easy use in the dark
  - Can control multiple doors with a separate code
  - Includes: keypad, 9V battery, and mounting hardware
  - With rolling security code
- Modulation:** AM  
**Weight:** 165g  
**Dimensions:** 55x165x20mm



# Universal Receiver STAR™250-433

## Access control receiver



- Universal receiver with antenna
- Rapid Learn™ feature programs multiple remote controls in seconds
- User-friendly programming technology makes it easy to add, block and delete up to 250 remote controls individually
- Ideal for gated communities, parking lots and garages
- Compatible with Chamberlain™, billion code, rolling code and keyless entry technologies
- 433.92 MHz
- Duplicate memory module may be removed for programming additional receivers or for safe back-up storage



### STAR™250-433

#### specifications:

Supply voltage:	12-24 volts AC or DC
Operating current:	250mA maximum
Oper. temp. range:	-40°C to +65°C
Frequency:	433.92MHz
Relay contact rating:	1 amp @ 24 volts AC or DC
Warranty:	2 years

### STAR™250-433 optional accessories

CGI part number	Description
041A2743X	Watertight box field install kit
86LM	Antenna extension kit
23024E	Transformer 230V/24V/AC

### STAR™250-433

#### compatible remote controls:

Billion Code	Rolling Code
4330E	94330E
4332E	94333E
4333E	94335E
4335E	
Keypads	Keypads
747E	9747E

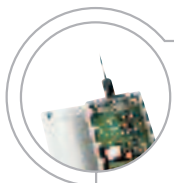




## Receivers

### 8002E 2-Channel Receiver

### Billion & Rolling Code



#### All Frequencies

- Two channels
- Accepts LiftMaster RF modules
- RF module not included
- External power connection
- Test button
- Potential free output
- Water resistant plastic housing IP55
- Antenna

**Memory:** 15 codes each channel:  
13 computer codes  
or rolling codes  
1 DIP-switch code,  
and 1 wireless keyless  
entry system code

**Voltage:** 9 to 35V AC/DC

**Relay:** 6A/60V max

**Range:** Approximately 45m

*Please note: Order RF module separately*

**2-Year Warranty on Receiver**

### 7433E Three Channel Co-axial Universal Receiver

### Billion Code



#### Frequency 433.92MHz

- Three independent channels (one can be set for normally closed operation) -computer (billion) code
- Optional Plug-in AC transformer terminal
- External co-axial antenna included
- 455mm color-coded wire leads for each channel provided
- Continuous contact closure
- Open/Close/stop function
- Potential free output

**Type:** AM superregenerative

**Memory:** Each channel accepts 4 computer codes, 1 DIP switch code and 1 wireless keyless entry system code

**Voltage:** 18-35V AC or DC with automatic recognition

**Range:** Approximately 45m

**Output Control:** Relay switches up to 5A

**3-Year Warranty**

## RF modules

### 801221 RF module

#### Frequency 433.92MHz



- Superheterodyne ("Narrow-band")
- For LiftMaster remote controls
- Direct plug-in to 801702, 801337 or 8002E

**Modulation:** AM



## Accessories for Remote controls

### ANT4X-1LM Remote Antenna Mounting Kit

For use with the co-axial antenna connection on LiftMaster garage door and gate opener when remote operation is needed.



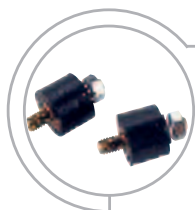
- Kit contains: 433.92MHz antenna, adapter, antenna bracket and 6.0m of cable.

# Door and Operator Accessories



## 75LM Illuminated Doorbell Push-button

- Non-Polarized installation
- High-impact, weather-resistant plastic construction
- Will work with either AC or DC openers
- Includes: push button and mounting screws



## 89LM Vibration Isolator Kit

- Installs between operator and ceiling mount
- Reduces noise from transmitted vibration
- Includes: two vibration isolators, lock-washers and nuts



## 78LM Multi-Function Control Panel

- Large actuator button with continuous illumination via an LED
- Large lock and light buttons
- The lock/security switch, when activated, prevents the operator from receiving remote control signals
- Light switch turns the garage door opener light on and off
- Wire routing through all 4 sides of panel
- For use on LiftMaster Garage Door Openers with 3 terminal connections manufactured after 01.01.95

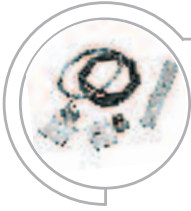


## 98LM Motion Detecting Control Panel

- Passive infrared sensor (PIR) will automatically turn on the garage door opener light(s) when a person enters the sensing area
- Can be used in place of a standard illuminated push button or multi-function control panel
- Same functional features as model 58LM/78LM multi-function control panels
- 150° PIR sensing angle
- On/off switch
- Light sensitivity adjustment
- Illuminated push button
- Soft white plastic housing for a *finished* look in garage
- For use on LiftMaster Garage Door Openers with 3 terminal connections manufactured after 01.01.95

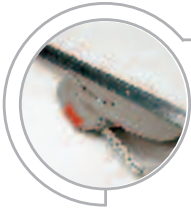


## Door and Operator Accessories



### **EQL01 Door Handle Quick Release 2.5m cord length** **EQL02 Door Handle Quick Release 4.0m cord length**

- For exterior manual operation
- Use garage door handle and lock
- Includes: cable, hardware, adapters and instructions



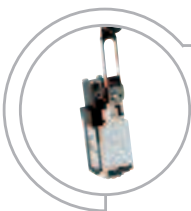
### **1703E The Chamberlain Arm™** **The Chamberlain Arm™**

- Especially designed for the unique requirements of British canopy doors
- Delivered pre-assembled with an integral safety guard
- Easy installation
- Can open a canopy door to the full horizontal position
- Includes: fully assembled door arm, straight connecting arm, hardware and mounting template



### **1702E Quick Release Lock**

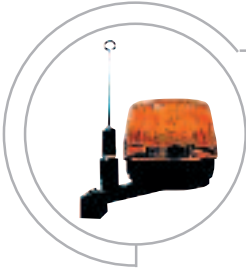
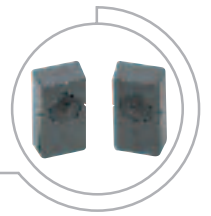
- For exterior manual operation
- 1.8m industrial strength connecting cable
- Non-corrosive stainless steel face plate and spur washer
- Extension sleeve for doors up to 50mm thick
- Positive connection between cable and trolley release
- Includes: lock, sleeve, cable, connectors and two keys



### **16200LM Door-in-Door Switch**

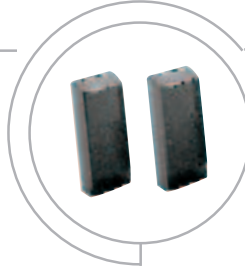
- For use with pedestrian doors within a garage door
- Prevents the operator from activating when the switch/pedestrian door is open
- Open/close switch, easy to connect to garage door opener
- Includes: switch, wires and hardware

# Accessories – Safety



## **FLA230-2 Flashing Light Kit**

- 230 Volt
- Constant signal input
- Flash board included
- Antenna & cable included (2m)
- Can be mounted on walls



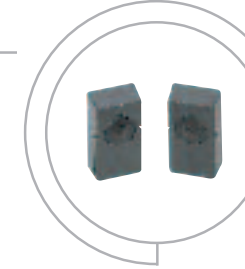
## **100263 Infrared Sensor System "Relay"**

- Compatible to all common electronic controls
- Approved system
- 12-35 Volt - Wiring NO or NC
- Range: approx. 20m



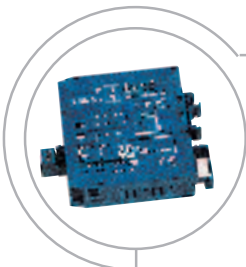
## **770E The Protector System™ Failsafe Infrared Sensor System**

- IP 56
- Current draw - 13 ma max
- Operating voltage - 6 V
- For use with CB3 & all LiftMaster garage door openers
- Red light LED indicates IR beam continuity
- Heavy duty steel brackets protect sensor
- Includes: emitter, detector, brackets, wires and hardware



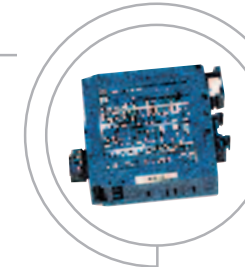
## **771E Failsafe Infrared Safety Sensor**

- IP44
- Current draw 20mA maximum
- Status LED indicates the IR sensor's continuity
- For use with CB3 & all LiftMaster garage door openers
- 2-wire system



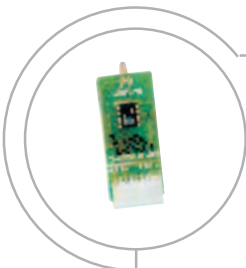
## **203292 Loop Detector 1-Channel**

- 24V AC/DC
- IP40
- Requires no special loop wire
- Training manual available GB/D
- For safety or as switch to use



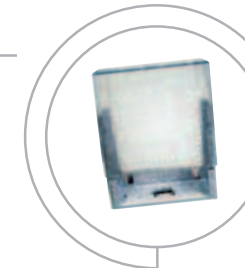
## **203308 Loop Detector 2-Channel**

- 24V AC/DC
- IP40
- Requires no special loop wire
- Training manual available GB/D
- For safety or as switch to use
- For direction detecting or 2 single loops



## **801696 Safety Module for operation with 770E and electronic control GOC1A**

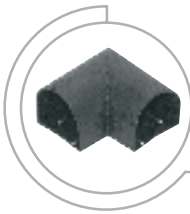
- System is fail-safe
- Easy to install
- Function indicator



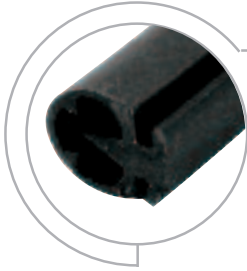
## **600039 Inside Mount Slider Box**

- For CB2 or GOC2
- For logic boards 145 x 120mm
- Suitable for common controls
- Mounting of control board under the cover





## Safety Edges



### **600046 Set** **2.5m Safety Edge (Small)**

- 2.5m (8 ft.) rubber profile
- 2.5m (8 ft.) rubber profile mounting rail
- Assembly pack (600060) required

### **600053 Bulk Pack** **20m Safety Edge Profile (Small)**

- 20m (66 ft.) rubber profile



### **600060 Assembly Pack**

- Assembly pack required for each safety edge
- Closure cap
- Plug with cable
- Connection plug 8.2K ohm
- Cyanacrylat adhesive - 3g
- Abrasive paper

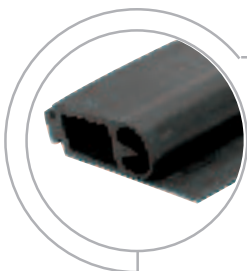


### **600169 Safety Edge** **1m Profile (Medium)**

- 1m (3.2 ft.) rubber profile medium
- Assembly pack 600152 required

### **600138 Bulk Pack** **20m Safety Edge Profile (Medium)**

- 20m (66 ft.) rubber profile medium
- Assembly pack 600152 required



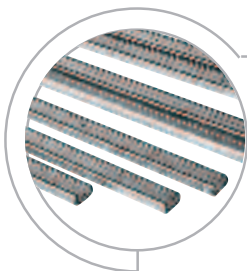
### **600176** **1m Safety Edge Profile (Large)**

- 1m (3.2 ft.) rubber profile large
- Assembly pack 600152 required



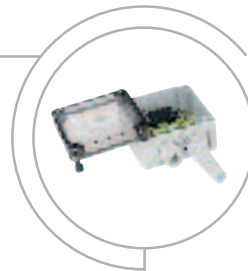
### **600152 Assembly Pack** **Safety Edge (Medium/Large)**

- Assembly pack required for each safety edge
- Closure cap
- Plug with cable
- Connection plug 8.2K ohm
- Cyanacrylat adhesive - 3g
- Abrasive paper



### **600077 Bulk Pack** **Safety Edge Mounting Rail 20m**

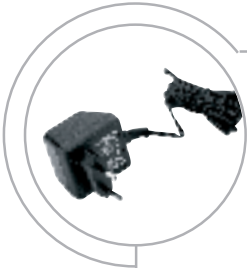
- Rail in 2.0m length each
- Water-resistant
- Fits all safety edges



### **600213 Interface Box** **for Safety Edges**

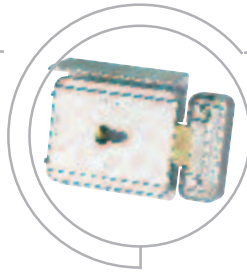
- Universal interface box for safety edge
- IP55
- TÜV approved
- Suitable for all gate opener applications
- Safety disabler
- Not required for GOC1A, BAS300K, CB3

# Accessories



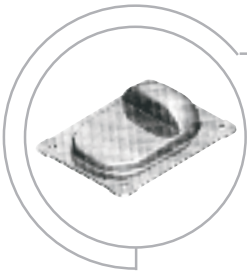
**23009E 230V/9V/AC**  
**23024E 230V/24V/AC**  
**Transformer**

- CEE 7/16 Europlug
- Cable - 1m



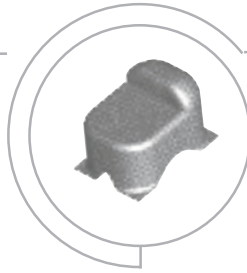
**203285 12 Volt (CB1, GOC1)**  
**600022 24 Volt**  
**E-Lock**

- 12-24 Volt AC/DC power
- Heavy-duty construction
- Compatible to all locks
- Release force up to 200kg



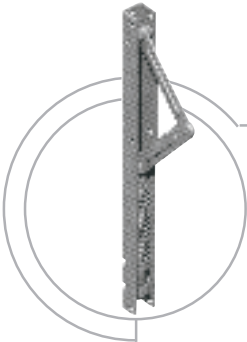
**203315**  
**Standard Hardstop**

- 122mm x 100mm
- 37mm and 19mm high
- Zinc coated
- For screw mount



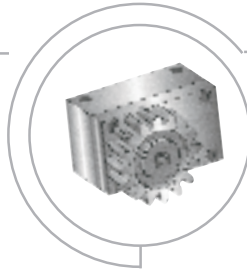
**203322**  
**Hard Stop High**

- 72mm x 100mm
- 70mm high
- Zinc coated
- For concrete mount



**203339**  
**Mechanical Floor Lock for**  
**Double Wings**

- Locks one wing of a double wing gate
- Second wing can be locked with an E-lock then
- Avoids need for floor locks



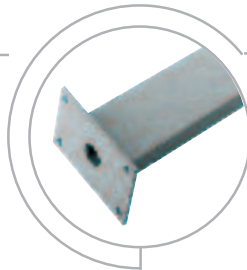
**203346**  
**Wing Buffer**

- For rising Sliding Doors up to 500kg + 10° max.
- Secures wing when operator is released
- For outside use
- Direct connected to rail (Module 4)
- No power required



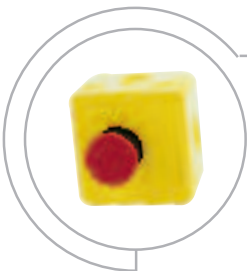
**60008**  
**IR Sensor Stand-530mm**

- Universally accommodates any IR sensor
- Powdercoat paint finish for rust resistance
- Heavy-duty steel construction



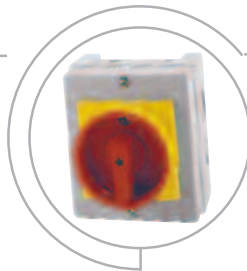
**600015**  
**Key Switch Stand-1100mm**

- Recommended for all keyless entry code systems
- Recommended for flush mount switch
- Powdercoat paint finish for rust resistance
- Heavy-duty steel construction



**600084**  
**Emergency Stop**

- IP65
- VDE 0660
- Plastic enclosure
- 71.6x71.6x47.5 mm



**600091**  
**Main Switch**

- IP65
- VDE 0660
- Plastic enclosure
- 71.6x71.6x47.5 mm

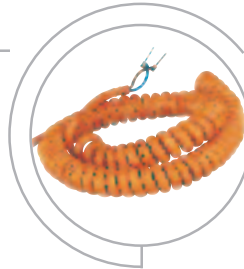


## Accessories



### **G-AC1103** **Junction box**

- 2 x PG9 cable entries in box
- 1 x PG 9 with protection sleeve lid for spiral cord



### **600220** **Coiled Cable**

- 2-wire X 0.50mm<sup>2</sup>
- PUR industrial quality
- 3m extendable length
- For Sliding Doors up to 5m
- For Wing Gates
- For Safety Edges



### **G-AC1001** **Coiled Cable**

- 4-wire x 0.50mm<sup>2</sup>
- PUR industrial quality
- 3m extendable length



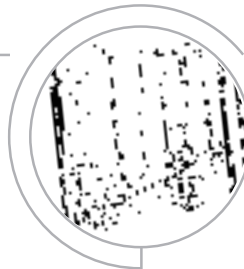
### **G-NSPG30/4** **Coiled Cable**

- 4-wire x 0.75mm<sup>2</sup>
- 3m extendable length
- Rubber



### **G-NSPG45/4** **Coiled Cable**

- 4-wire x 0.75mm<sup>2</sup>
- 4.5m extendable length
- Rubber



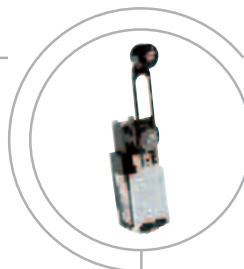
### **G-INTSET** **Inductive Signal Transfer System**

- For sliding doors and gates
- Use instead of coiled cables
- Up to 10m
- Transfers 2-output/2-input signals
- 230V power input
- IP65



### **ANT4X-1LM** **Remote Antenna Mounting Kit**

- For 433.92MHz radio controls
- For use with the co-axial antenna connection on LiftMaster garage door and gate opener when remote operation is needed.
- Kit contains: 433.92MHz antenna, adapter, antenna bracket and 6.0m of cable.



### **16200LM** **Limit Switch**

- In case hard-stops are not available
- Prevents operator from activating when the switch/pedestrian door is open
- Easy to install as normal release function (NO) or normal closure function (NC)
- IP67



### **100034 Keyswitch** **2-Function, Surface Mount**

- Profile half cylinder
- 75x75x50 deep
- IP54, 3 keys



### **100041 Keyswitch** **2-Function, Flush Mount**

- Profile half cylinder
- 75x75x50
- IP54, 3 keys

# The LiftMaster Dealer Extranet



## The LiftMaster™ Dealer Extranet...

### Protected Website Designed Exclusively For You!

Now you can access the latest product information, technical bulletins, promotional offerings, place orders and check shipping status ... all from your computer 24 hours a day. 7 days a week.

Use your login and password to log on to the Dealer Extranet at <http://b2bnet.liftmaster.com>. With your catalog in hand placing an order on the website is easy.

Please call your LiftMaster Customer Service +49(0)6838/907 172 for your personal password.

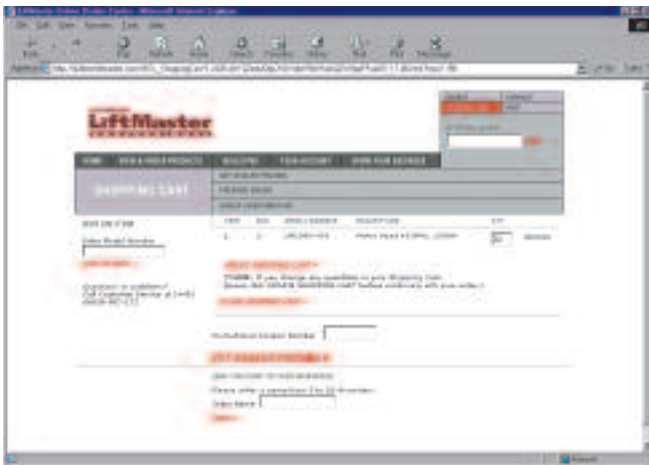
1) make a note of the model you wish to order that is in the catalog:



#### 94335E 3-Channel Mini Remote Control

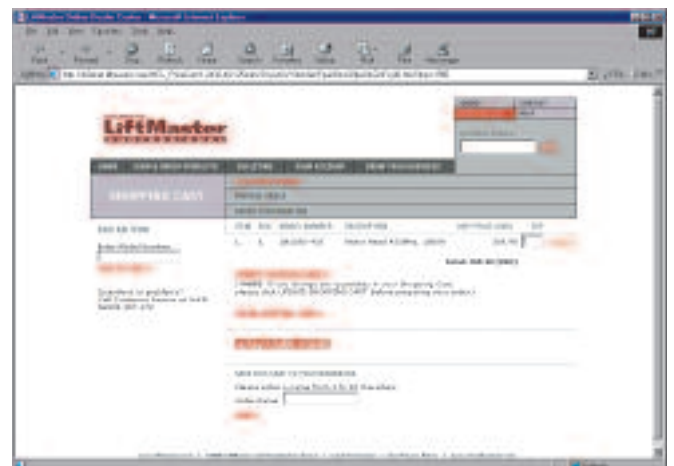
- Three channels
- Each channel separate rolling code
- Operates with two 3V batteries CR2032 (included)

2) Log on to the internet and go to the shopping cart.

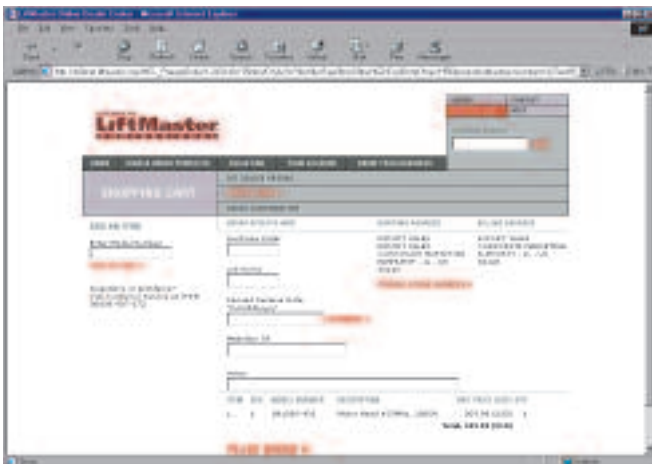


3) Enter the model number from above in the "Add to Cart" box. then click on add to cart. Add the products you need, and adjust the quantities and click on "update the shopping cart".

4) The third step is to click on: GET DEALER PRICING.



5) Then Click on PREPARE THE ORDER. And fill in all of the areas in that are empty. Finally click on: Place Order and your are finished.



## Customer Service Offices - Chamberlain "Professional Products"

### Germany

Alfred-Nobel-Str. 4  
66793 Saarwellingen  
Germany  
Tel.: +49(0)6838/907-250  
Fax: +49(0)6838/907-179

### USA

845 Larch Ave.  
Elmhurst, Ill., 60025  
USA  
Tel.: +1 630-993-6025  
Fax: +1 630-530-6751

## Chamberlain Professional Products Branch Offices

### UK

Abbey Manor Business Centre  
Preston Road  
Yeovil Somerset BA20 2EN  
Tel. (+44) (0)1935 848526  
Fax. (+44) (0)1935 848527

### Scandinavia

St. Jorgensvei 77  
0662 Oslo  
Norway  
Tel.: (+47) (0)97 59 11 18  
Fax: (+47) (0)22 65 51 26

### Benelux

Postbus 10169  
1001ED Amsterdam  
The Netherlands  
Tel.: (+31) 020-673-3626  
Fax: (+31) 020-673-3610

### France

4, rue de Copenhague  
67300 Schiltigheim  
France  
Tel.: (+33) 03 87 98 62 84  
Fax: (+33) 03 87 95 48 16

### NE Europe

ul. Sportowa 10/17  
35111 Rzeszow  
Poland  
Tel.: (+48) 17 850 7950  
Fax: (+48) 17 853 0122

### Italy

Via Fermi 5  
24053 Brignano Gera d'Adda (BG)  
Tel. (+39) 0363.382100  
Fax. (+39) 0363.817023

### Asia

Chamberlain Pte Ltd.  
6-C Tanjong Rhu Road  
10-02 La Ville  
Singapore  
Tel.: (+65) 6342 0418  
Fax: (+65) 6346 2248

### SE Europe

Deviata 4/A  
83101 Bratislava  
Slovakia  
Tel.: (+421) 2 5479 3727  
Fax: (+421) 2 5465 2932

### China

Chamberlain Automation  
Systems (Shanghai) Co., Ltd.  
1st Floor, Building A, 500 Bing Ke Road  
Waigaoqiao Free Trade Zone,  
Pudong New Area,  
Shanghai, China 200131  
Tel: (+86) 21 5869 8833  
Fax: (+86) 21 5869 0432

Chamberlain is an ISO9001 certified manufacturer

